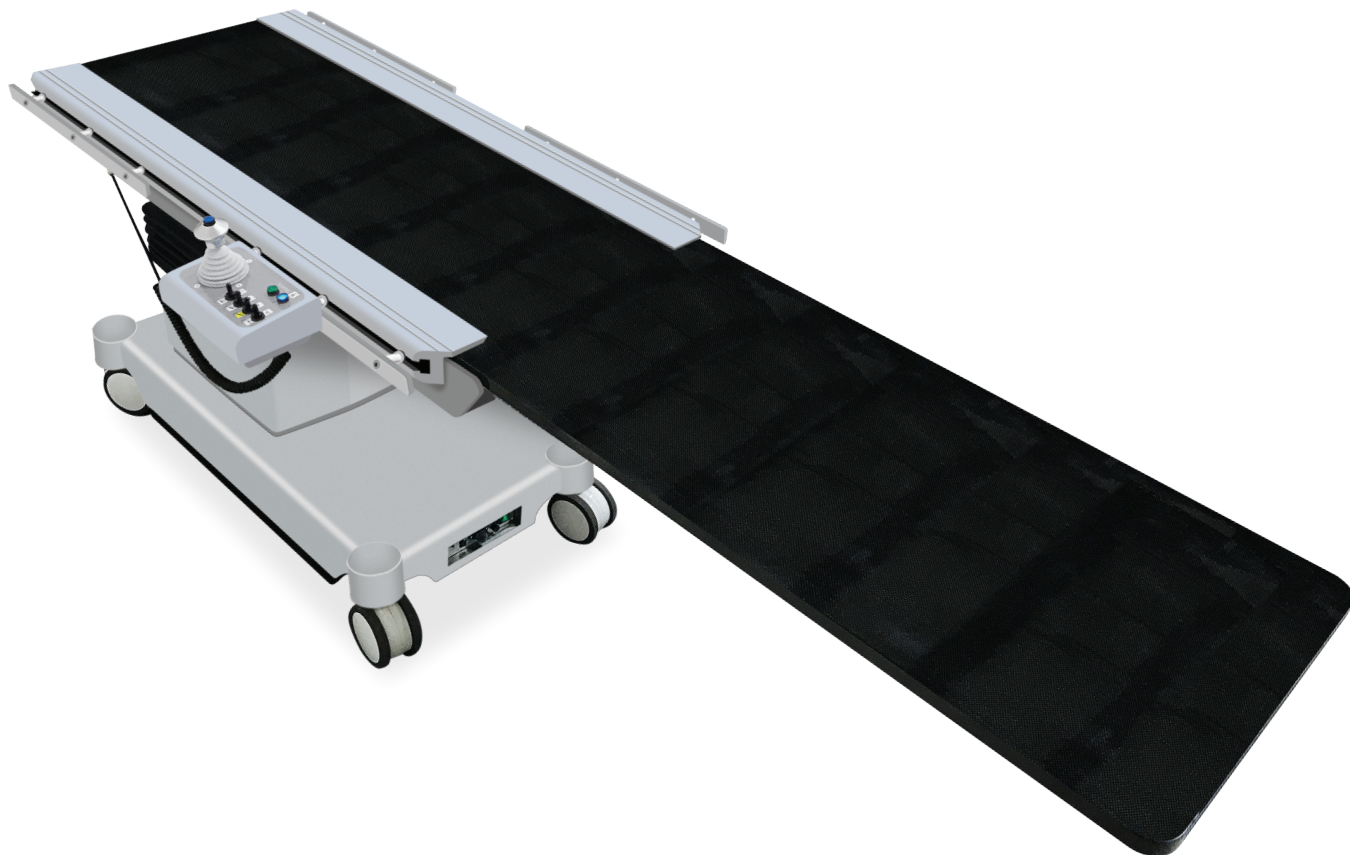


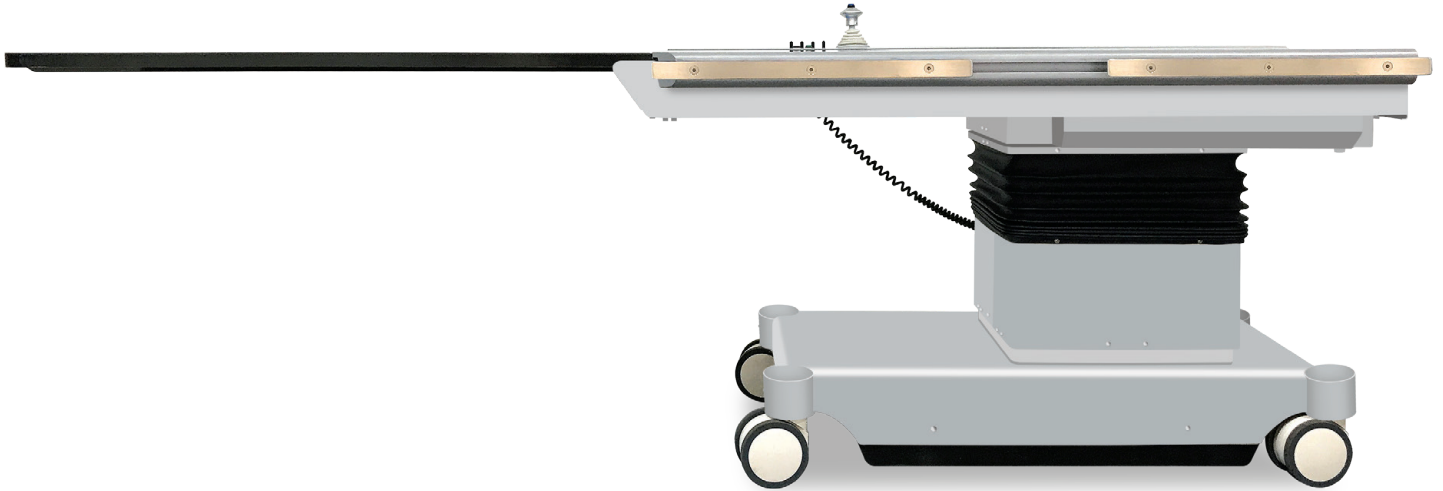
ATS TRINITY[®]

CARBON FIBER TOP IMAGING TABLE



INTUITIVE MOTION
UNYIELDING STABILITY

ATS TRINITY®



Intuitive Motion

Built to the foremost standard of quality, with intuition and stability in mind. The ATS Trinity® imaging table exceeds the standards in patient positioning. The ATS surgical table features a C-arm compatible carbon fiber table top with a 550 LB lift capacity. The ATS is equipped with a motorized 4 way floating top to maximize patient imaging access. Other movements include: Trendelenburg, Reverse Trendelenburg, Lateral Tilt, and Up/Down elevation.

Patient Safety

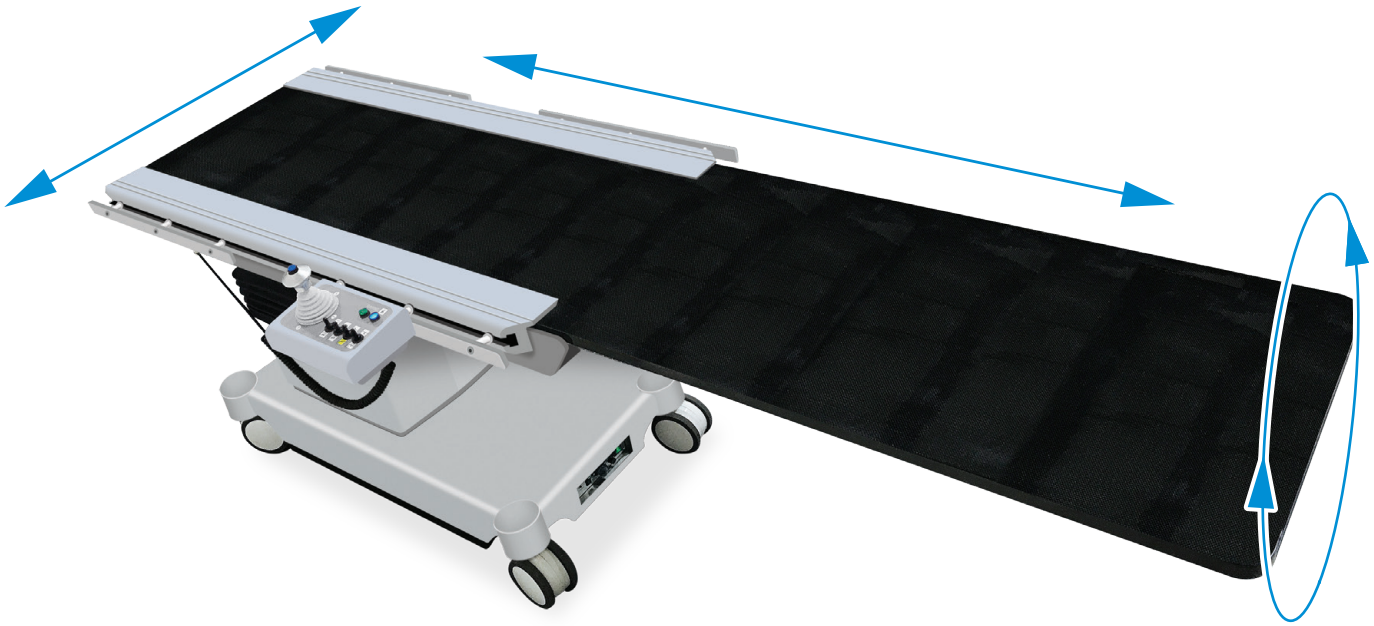
The ATS Surgical table is mobile on 4 anti-static castors. A floor lock system braces the table in place with unyielding stability. A battery backup system is a standard feature. The removable hand controller is ergonomic and outfitted with safety locks to avoid unintentional table movement. A return to level function is available as an option.

ATS Trinity Features

- Carbon Fiber Top
- Silent Electro-Hydraulic Movements
- 550 LB Lift/Weight Capacity
- Electronic Control Safety Lock
- Mobile Anti-static Castors with Floor Lock
- Floating Top
- Left and Right 15 Degree Lateral Lilt
- Trendelenburg / Reverse Trendelenburg
- Battery Backup
- Accessory Rails
- Optional Auto-Reset / Level Function

Built To The Foremost Standard Of Quality

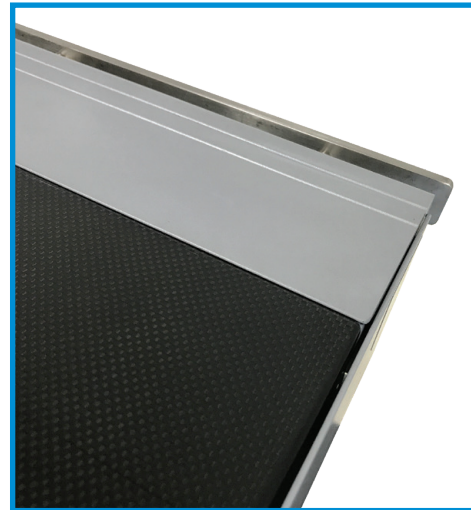
WITH MOVEMENT AND STABILITY IN MIND.



- 4 Way Floating Top with Lateral Tilt

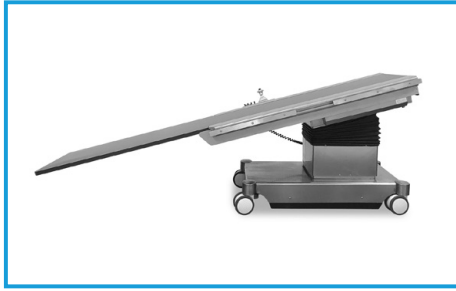


- Intuitive All-In-One Removable Hand Control

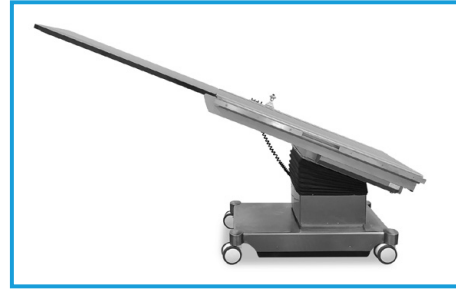


- Carbon Fiber Top with Removable Accessory Rail Mounts

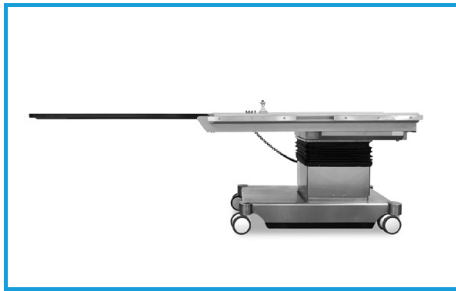
ATS TRINITY® TECHNICAL SPECIFICATIONS:



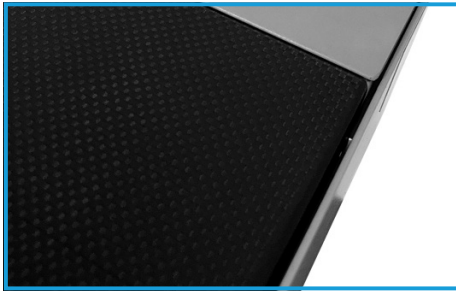
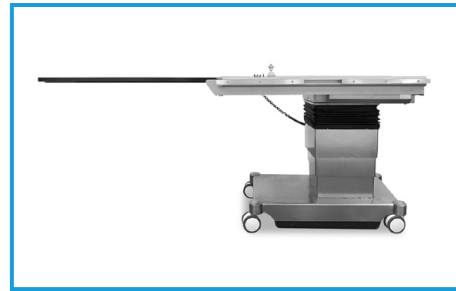
■ Trendelenburg



■ Reverse Trendelenburg



■ Adjustable Elevation



■ Carbon Fiber and Stainless Steel Construction

SPECIFICATIONS:

Table Top Length	2500mm
Table Top Width	500mm

MOVEMENTS:

Adjustable height	700mm - 1100mm
Trendelenburg / Reverse Trendelenburg	30 Degrees
Oblique left/Right Lateral Tilt	15 Degrees

Longitude Table Top Float	700mm
Side/Side Table Top Float	200mm
Weight Capacity	250Kg (550 LBS)
Ingress Protection	IPX4
Power Supply	Universal AC 110V-220V / 50Hz-60Hz 50Hz-60Hz DC 24V
Battery Backup	2.4 AH